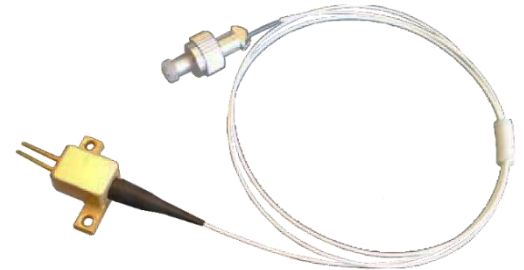




SPM660-1W-105M-P2

- Red Pigtailed Laser Diode
- 660±10 nm, 1 W
- 105 µm Multi Mode Fiber
- FC/PC Connector
- 2-Pin Heat Load Package



Description



SPM660-1W-105M-P2 is a red pigtailed laser diode, typically emitting at 660 nm with an output power of 1.0 W. It features a 2-pin heat load package, and features a **105 µm multi-mode fiber** with FC/PC connector. Different fibers and connectors as well as built-in PD and TEC are optionally available.

Maximum Ratings*

Parameter	Symbol	Values		Unit
		Min.	Max.	
Reverse Voltage	U_R		2.0	V
Operating Temperature	T_{OPR}	+ 10	+ 30	°C
Storage Temperature	T_{STG}	- 20	+ 80	°C
Soldering Temperature (t_{max} . 3s)	T_{SOL}		+ 260	°C

* Operating close to or exceeding these parameters may damage the device

Electro-Optical Characteristics ($T_{CASE} = 25^\circ\text{C}$)

Parameter	Symbol	Values			Unit
		Min.	Typ.	Max.	
Peak Wavelength	λ_P	650	660	670	nm
Spectral Width (FWHM)	$\Delta\lambda$		3.0		nm
Temperature Coefficient			0.25		nm/°C
Output Power	P_O		1.0		W
Operating Voltage	V_F		2.2	2.5	V
Threshold Current	I_{th}		0.5	1.0	A
Operating Current	I_O		1.6	1.8	A
Slope Efficiency	η		1.0		W/A
Fiber Spec.	Type		Multi-mode		
	Core diameter		105*		µm
	Numerical Aperture (N.A.)		0.22		
	Connector		FC/PC*		
	Length		80**		cm
Built-in Photodiode			optional		
Built-in TEC			optional		

* FC/APC, SC, SMA905 con., 200µm, 400 µm core diameter, available on request

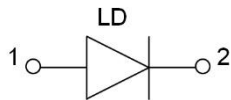
** Length of fiber customizable



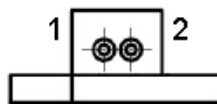
Electrical Connection

Pin Configuration*

Pin #	Function
Pin 1	LD Anode
Pin 2	LD Cathode

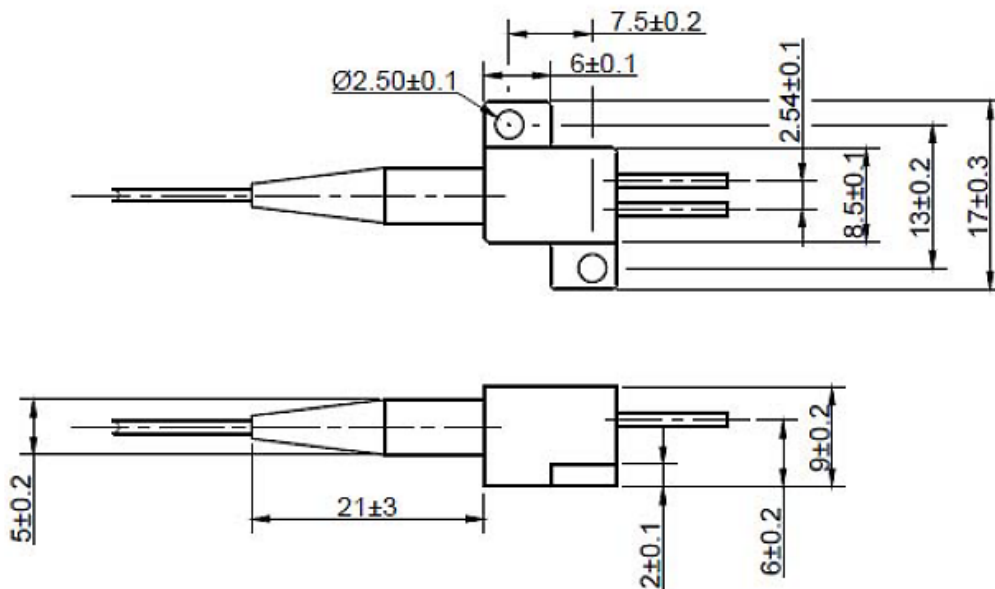


PIN Bottom View



* subject to change

Outline Dimension



All dimensions in mm

Precautions

Safety

Laser light emitted from any laser diode may be harmful to the human eye. **Avoid looking directly into the laser diode's aperture.** The use of optical lenses will increase eye hazard



ESD Caution

Always do handle laser diodes with care to **prevent electrostatic discharge.** We advise to **wearing wrist straps, and grounding all applicable work surfaces,** when handling laser diodes

Operating Considerations

Usage of current regulated drive circuits is mandatory We advise to operate this laser diode with a current source and heat sink, and to never exceed the maximum specifications as outlined in this datasheet.



© All Rights Reserved

The above specifications are for reference purpose only and subjected to change without prior notice