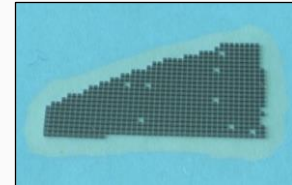




ELC-650-24



Description

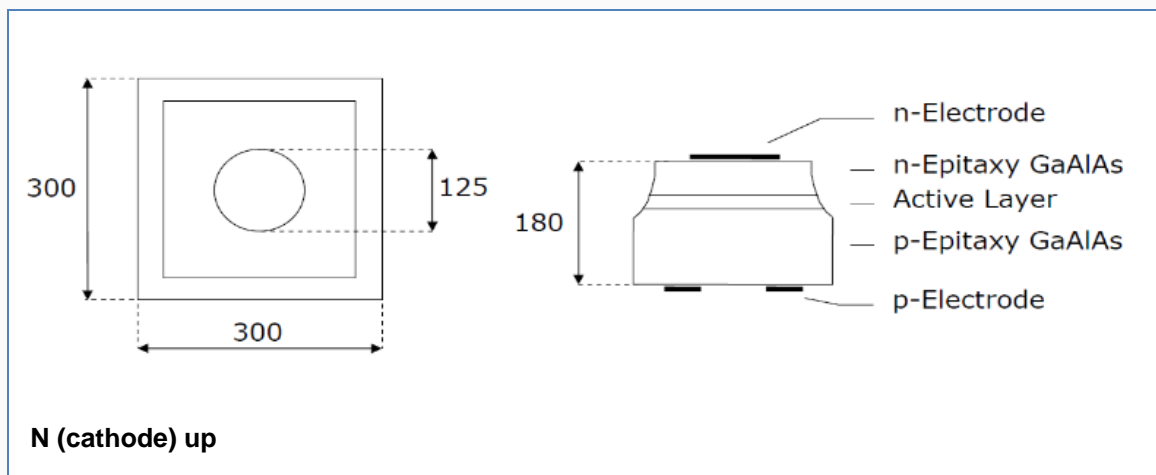
ELC-650-24 is a AlGaAs/AlGaAs based 300x300 μm bare LED chip die of double hetero structure in dual combination (DDH) with gold plated electrodes. It has a typical emission wavelength of 650 nm. **ELC-650-24** is delivered on adhesive film with the wire bond side up.

Characteristics ($I_F=20\text{mA}$, $T_{AMB}=25^\circ\text{C}$)

Parameter	Symbol	Values			Unit
		Min.	Typ.	Max.	
Emission Wavelength	λ_{peak}	640	650	660	nm
Forward Voltage	V_F		1.9	2.2	V
Reverse Voltage ($I_R=10\mu\text{A}$)	V_R	5			V
Radiant Power*	P_O	0.8	1.2		mW
Rise/Fall time	t_R/t_F		100/100		ns
Spectral bandwidth (FWHM)	$\lambda\Delta$		21		nm

*Measured on bare chip on TO-18 header

Drawing & Dimensions



All dimensions in μm