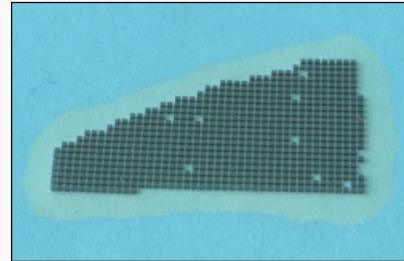




ELC-905-17



Description

ELC-905-17 is a AlGaAs based 365x365 μm bare LED chip die of double hetero structure in dual combination (DDH) with gold plated electrodes. It has a typical emission wavelength of 905 nm, and is delivered on adhesive film with the wire bond side up.

Characteristics ($I_F=20\text{mA}$, $T_{AMB}=25^\circ\text{C}$)

Parameter	Symbol	Values			Unit
		Min.	Typ.	Max.	
Emission Wavelength	λ_{peak}	895	905	915	nm
Forward Voltage	V_F		1.3	1.5	V
Reverse Voltage ($I_R=100\mu\text{A}$)	V_R	5			V
POWER (bare die on TO header)	P_O	3.0	4.0		mW
POWER (epoxy covered die on TO header)	P_O		8.0		mW
Rise/Fall time	t_R/t_F		400		ns
Spectral bandwidth (FWHM)	$\lambda\Delta$		55		nm

Drawing & Dimensions

Thickness	150 \pm 25	μm
Anode, gold alloy	1.5	μm
Cathode, gold alloy	0.5	μm

P (anode) up

All dimensions in μm