



10158



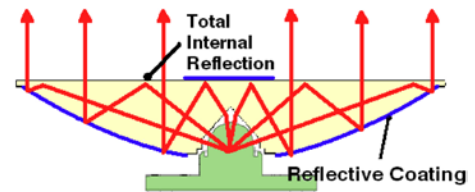
TECHNICAL DATA

Narrow Beam Optic for High Power LEDs **Catadioptic**

To get the narrowest beam from a single chip high power LED, that kind of catadioptic reflector optics had been designed. These are available in 60mm diameters. The ability to create very tight beams with FWHM divergence as small as 3 degrees makes them ideally suited to applications such as beacons and spot lights.

Specifications

- +/- 2° Ultra Tight Beam
- Ideal for Far Distance and Spot Illumination
- Suitable for: Cree, Seoul, Avago, Luxeon
- Diameter: Ø60 mm, Height: 11 mm
- Material: Polycarbonate
- Efficiency: ~70%



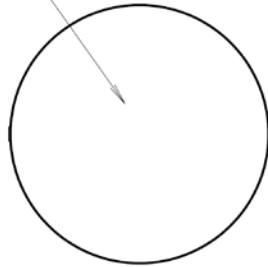
Performances

LEDs & Performances	Eff.	FWHM	Cd/lm	Spot	Cross-section
SSC P4 Cool White	69.6%	3.1	139.6		
Avago Aveon Cool White	67.1%	3.5	82.1		
Avago Moonstone Warm White	69.1%	7.1	33.4		
Cree MC-E XLamp® White	68.3%	7.2	39.9		

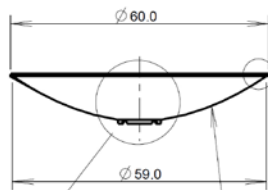
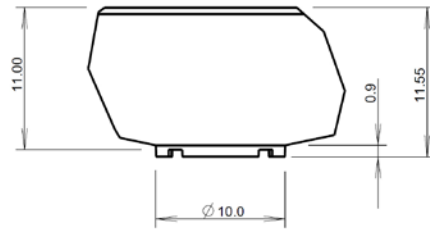


Drawing

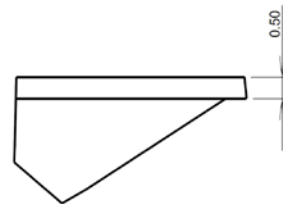
15.6 MM DIAMETER ALUMINIUM REFLECTOR ± 0.2 MM ON OD



DETAIL A
SCALE 3:1



SEE DETAIL B

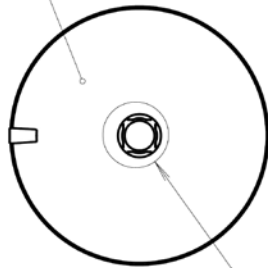


DETAIL B
SCALE 10:1

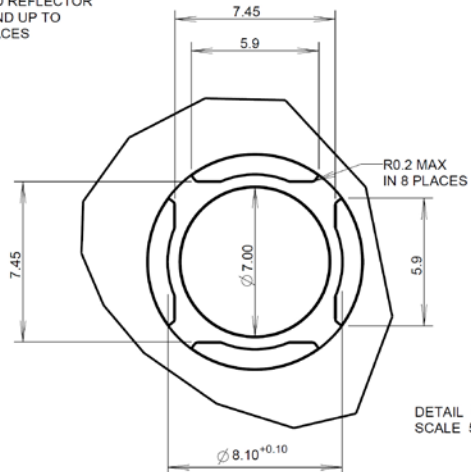
SEE DETAIL A

ASPHERIC SURFACE
SURFACE FINISH AS METALISED REFLECTOR
TO COVER WHOLE SURFACE AND UP TO
0.5 MM OVER ADJACENT SURFACES

THIS SURFACE
REFLECTOR



SEE DETAIL C



DETAIL C
SCALE 5:1

ALL DIMENSIONS IN mm

MATERIAL: COC